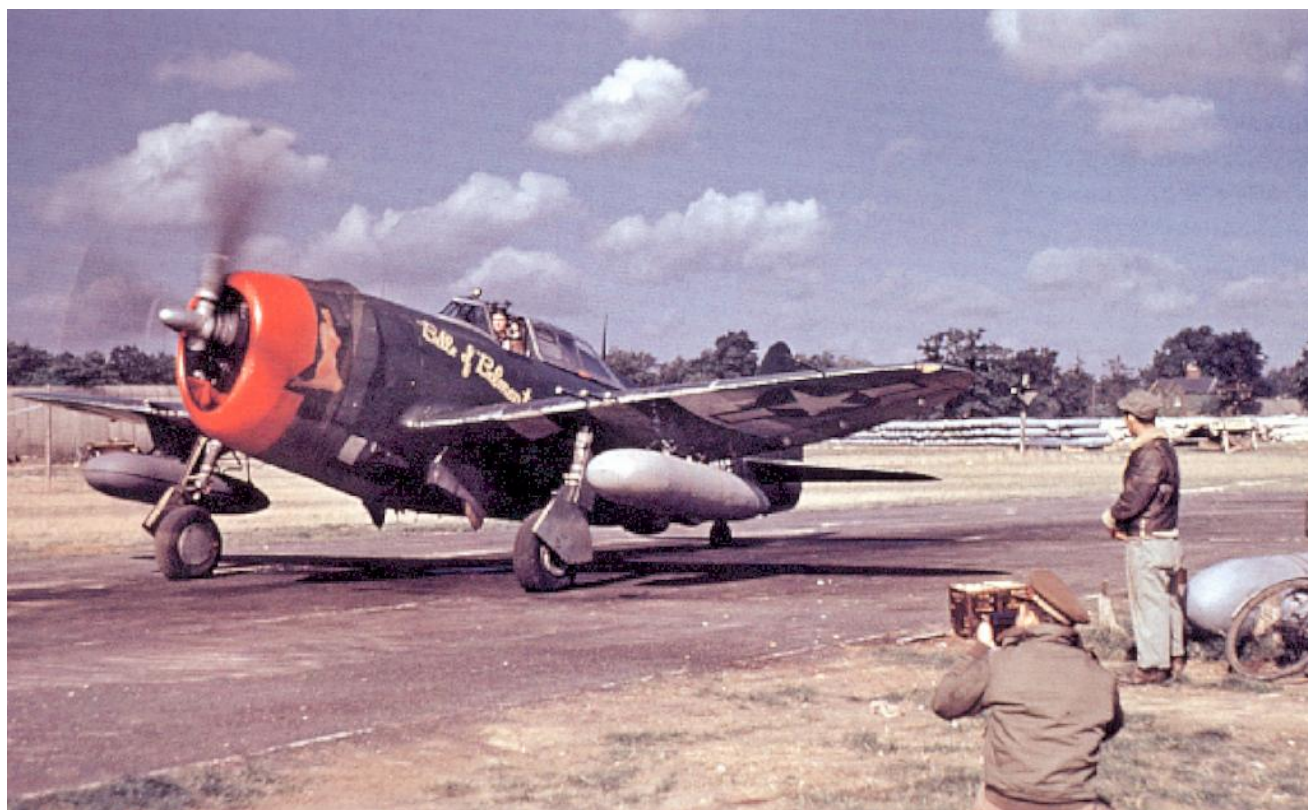




BOMBHELL DECALS

Lieutenant Armand A Laflam
56th Fighter Squadron 63rd Fighter Group, 8th Air Force



P-47D-22 RE UN-L, 42-26293, "Belle of Belmont"
Reference Photos & Observations



About Us

Bombshell Decals is a company with a desire to provide top quality decals in the iconic nose art genre. We are a small home-based company, located in The All American city of Fayetteville, North Carolina. This company was formed to create decals of subject matter Michael enjoys with the hopes that others will enjoy them also.

Michael is the chief designer, with a degree in Graphic Design who has a passion for building models and anything to do with modeling. From this passion and experience came the desire to design decals. Michael who patriotically served with the 101 Screaming Eagles, and whose father served honorably during WWII, grew up with a love of anything military related. Michael's wife Cheryl handles the orders, shipping and daily duties of running a business. Cheryl also has a love of art and supports Michael in this endeavor.

<http://bombshelldecals.com/>

Belle of Belmont was a P-47D-22 RE named and flown by Armand A. Laflam of the 63rd Fighter Squadron, 56th Fighter Group, 8th Air Force during 1944. We have included the only known photos of "Belle". We reviewed other aircraft from the 63rd Fighter Squadron at the during the same timeframe as well as from the same photographer (Mark H. Brown) to suggest different variations for our subject.

Resources

Aircraft Serial Number Search

<http://cgibin.rcn.com/jeremy.k/cgi-bin/gzUsafSearch.pl?target=42-26293&content=>

All photos are from Peter Randall's outstanding website, **Little Friends** (<http://littlefriends.co.uk>)

Littlefriends should be the first stop for 8th Air Force fighter history and photos.

Roger A. Freeman (Author) **The Mighty Eighth: Warpaint & Heraldry** Arms & Armour Press; illustrated edition (May 1998) ISBN-13: 978-1854093738



- Lt. Armand A Laflam, Belmont, CA. 63rd Fighter Squadron. P-47D-22 RE 42-26293 UN-L "Belle of Belmont. Star and bar barely visible under right wing, size unconfirmed.

Bombshell Decals Reference Photos for P-47D "Belle of Belmont" of Lt. Armand Laflam



This famous photograph reveals several interesting details:

- Upper wing invasion stripes have been painted over.
- 40 inch underwing stars and bars. (star and bar barely visible under right wing, size unconfirmed).
- Painted undercarriage struts.
- Red intake (inside cowling).
- Curtiss propeller.
- Two different tank types. Starboard wing is flat type and has pronounced seam.
- Unpainted canopy frames and mirror.
- Black pylons.

Bombshell Decals Reference Photos for P-47D "Belle of Belmont" of Lt. Armand Laflam



Side view of "Belle". Confirmation of 40 inch (Freeman Type 4) Star and Bar under the port wing. It appears that the Star and Bar may have been repainted. Wing pylon is painted black. Note the undercarriage leg cover only has black portion of invasion stripes applied. The rest of the cover is unpainted (NMF).

Bombshell Decals Reference Photos for P-47D "Belle of Belmont" of Lt. Armand Laflam

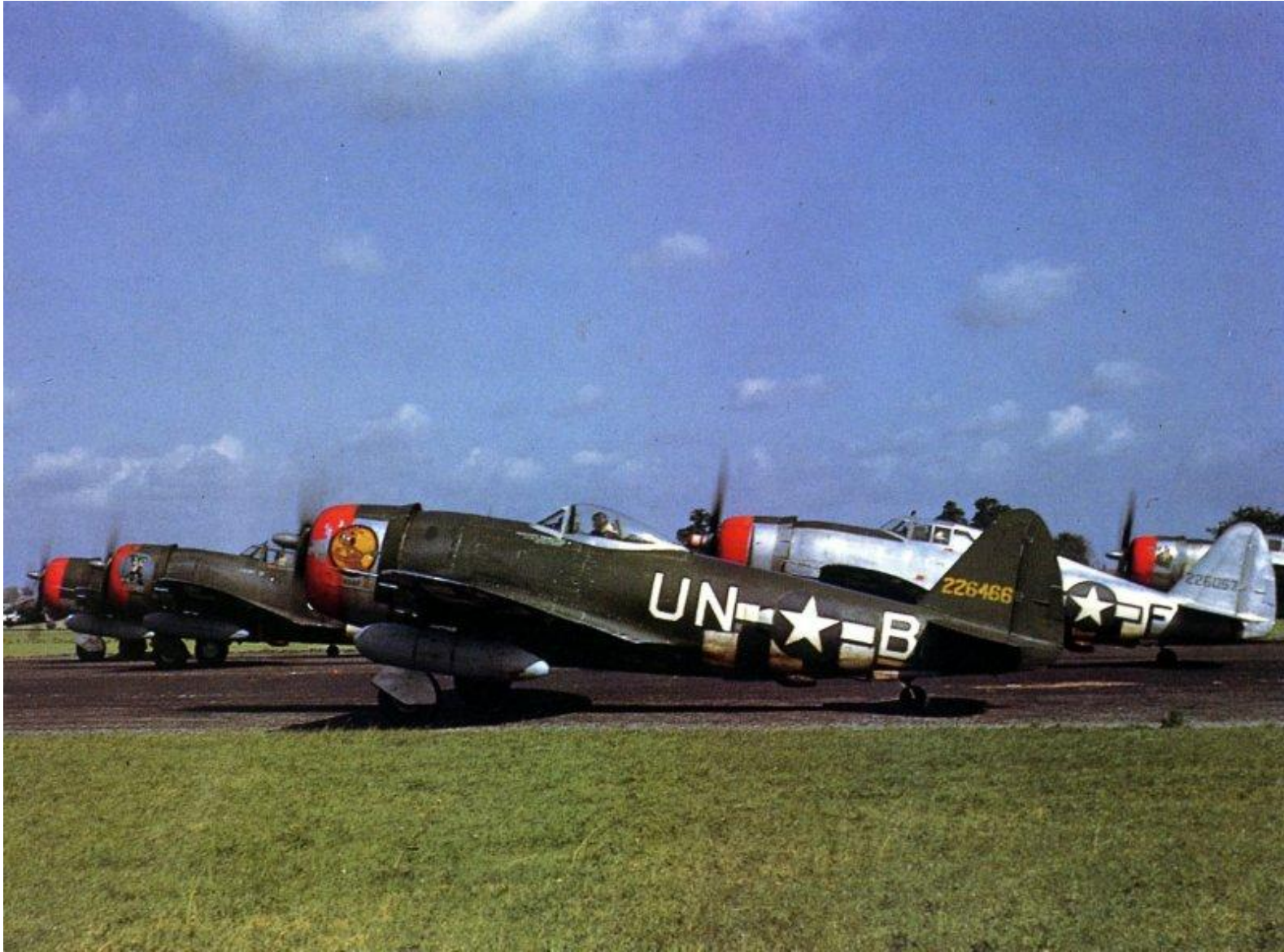


Bombshell Decals Reference Photos for P-47D "Belle of Belmont" of Lt. Armand Laflam



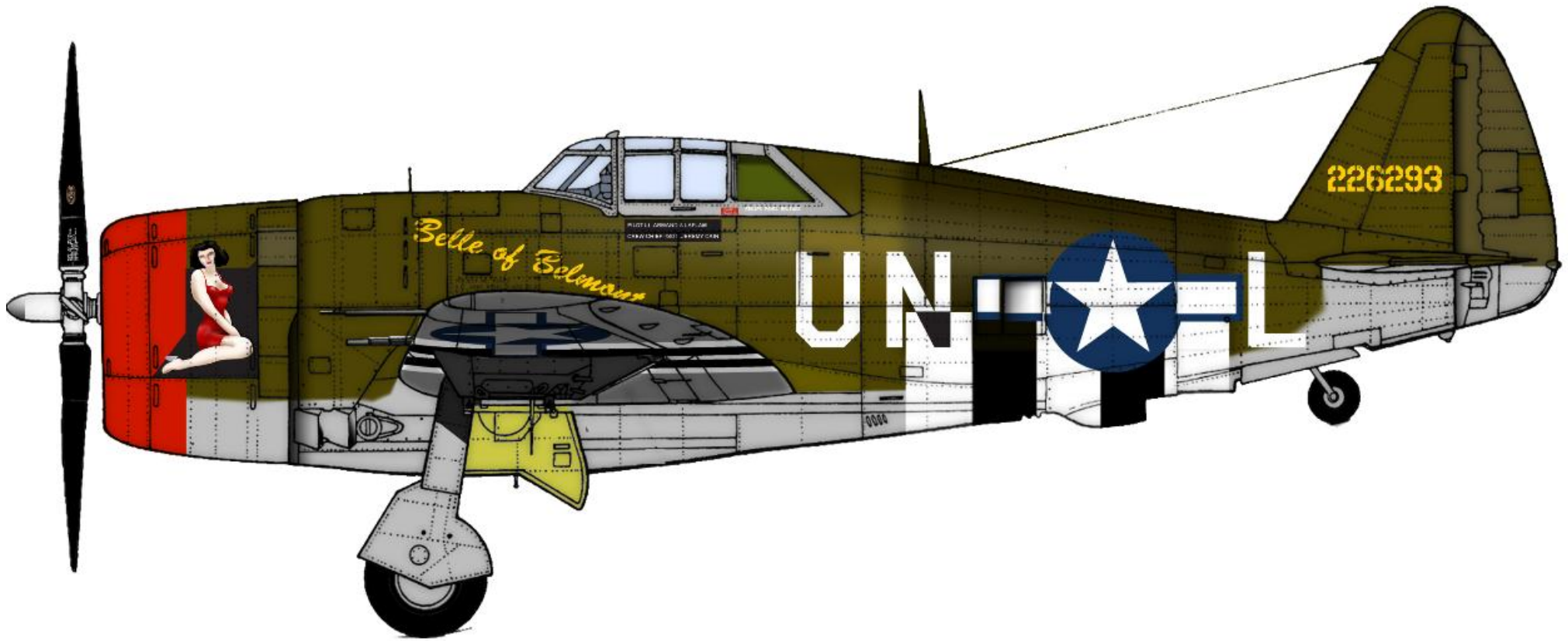
Cameron Hart's P-47D-22 around the same time as "Belle". This aircraft (42-26299) is from the same block as "Belle" (42-26293), Note the painted over invasion stripes on the upperwings and fuselage. Note the black painted portion of the squadron codes. We used this photo as the basis for one of the options for our decal sheet.

Bombshell Decals Reference Photos for P-47D "Belle of Belmont" of Lt. Armand Laflam

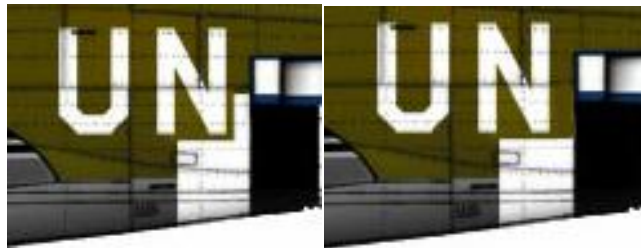


Anamosa II shows a different version of the invasion stripes\squadron codes combinations. Our decal sheet allows for this option as well.

Bombshell Decals Reference Photos for P-47D "Belle of Belmont" of Lt. Armand Laflam

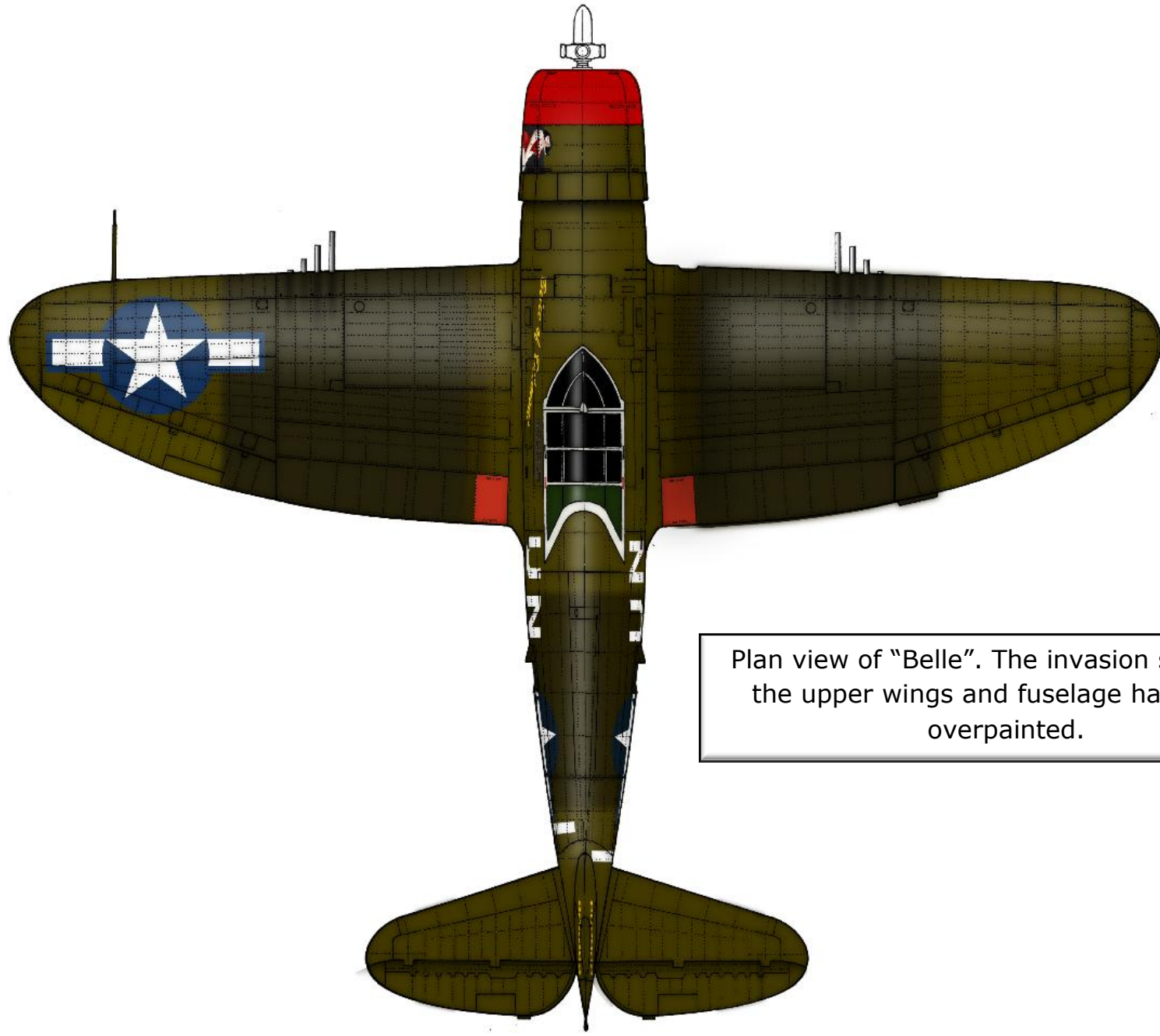


P-47D-22 RE 42-26293 Belle of Belmont profile. Note the upper fuselage invasion stripes have been overpainted. The wing pylons are black. The main undercarriage leg only has a single black invasion stripe applied. There are no white stripes on the undercarriage leg covers. Review the lower plan view later in the document for more detail.



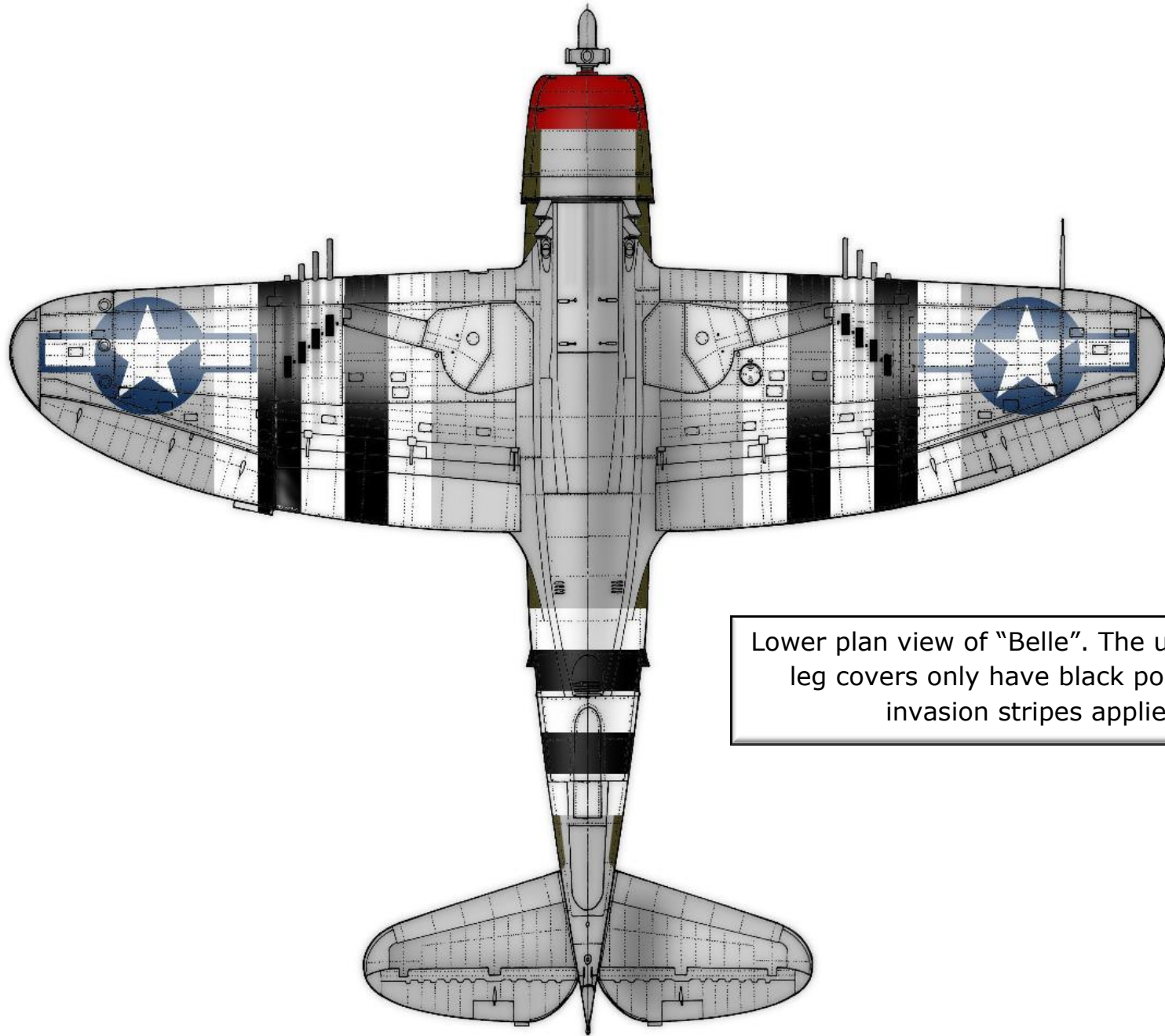
Alternate Styles of fuselage invasion stripes.

Bombshell Decals Reference Photos for P-47D "Belle of Belmont" of Lt. Armand Laflam



Plan view of "Belle". The invasion stripes on the upper wings and fuselage have been overpainted.

Bombshell Decals Reference Photos for P-47D "Belle of Belmont" of Lt. Armand Laflam



Lower plan view of "Belle". The undercarriage leg covers only have black portion of the invasion stripes applied.

Bombshell Decals Reference Photos for P-47D "Belle of Belmont" of Lt. Armand Laflam